

PROJECT:-
PROPOSED
INJECTION MouldING
FACTORY FOR
ANTE LECO METERING
COMPANY AT
BANDARAGAMA

TITLE
UPPER FLOOR PLAN &
SIDE ELEVATION

NOTES

THIS DRAWING MUST NOT BE COPIED OR USED BY OTHERS WITHOUT THE WRITTEN CONSENT OF ARCHITREND CONSULTANTS.

ALL DIMENSION ARE IN MILLIMETERS

DESIGNATION	NAME
Principal Architect	L.S. Perera
Project Architect	KMDS
Drawn by	SMS
Checked by	
Drawing No	AT/LECO/BAN/44/T/END/AR02
Drawing Path	
Date	Issued Date
27 - April - 2016	Scale
REVISION	Date
Revise Drawing No	Drawn by
Applicant Signature	

Sheet no :-

02-AR

ARCHITREND CONSULTANTS

Chartered Architects, Engineers,
 Quantity Surveyors &
 Interior Designers.

No.35,

Vihara Mawatha,

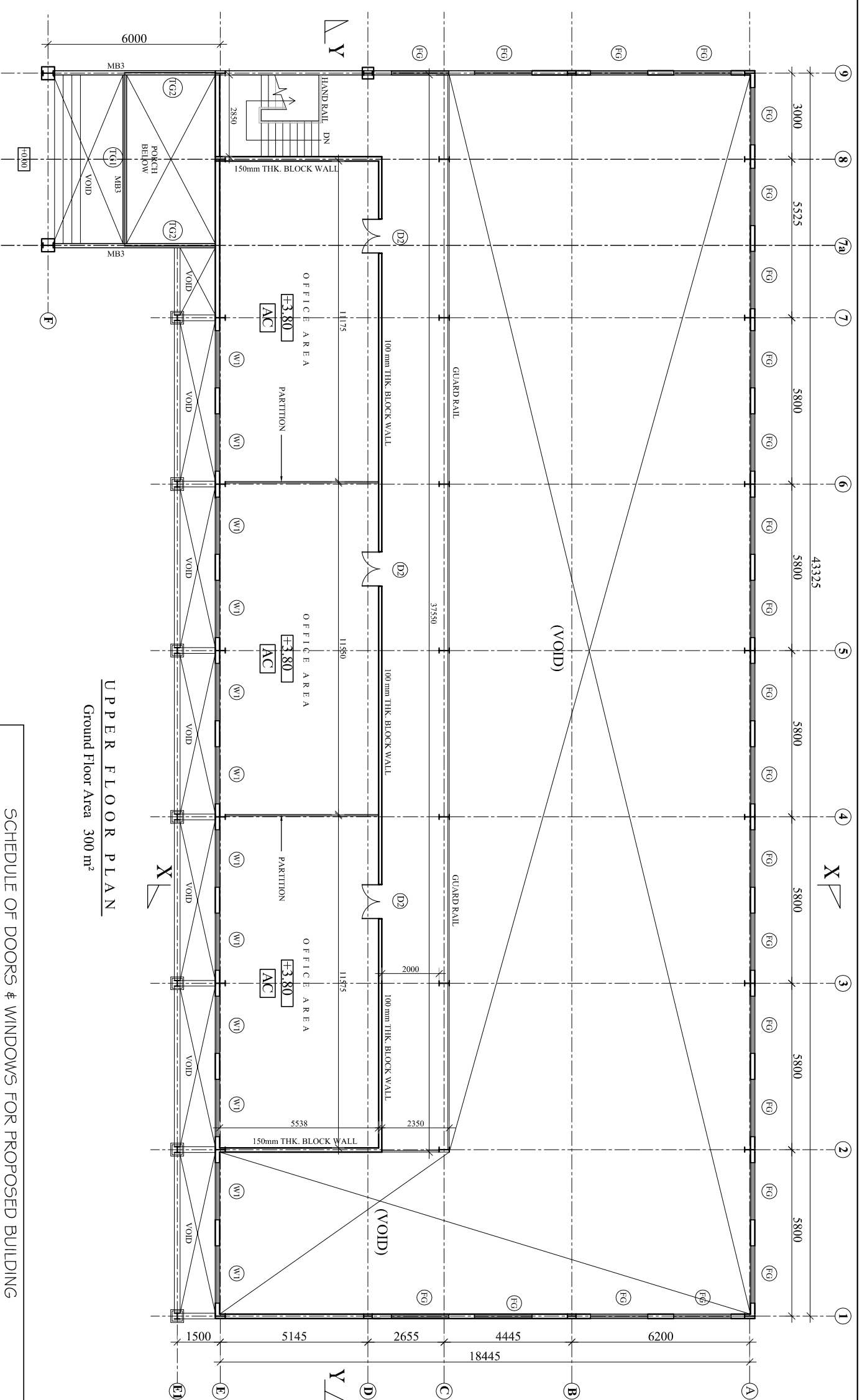
Pepilyana.

Tel : 011 - 4337787

Fax : 011 - 2724755

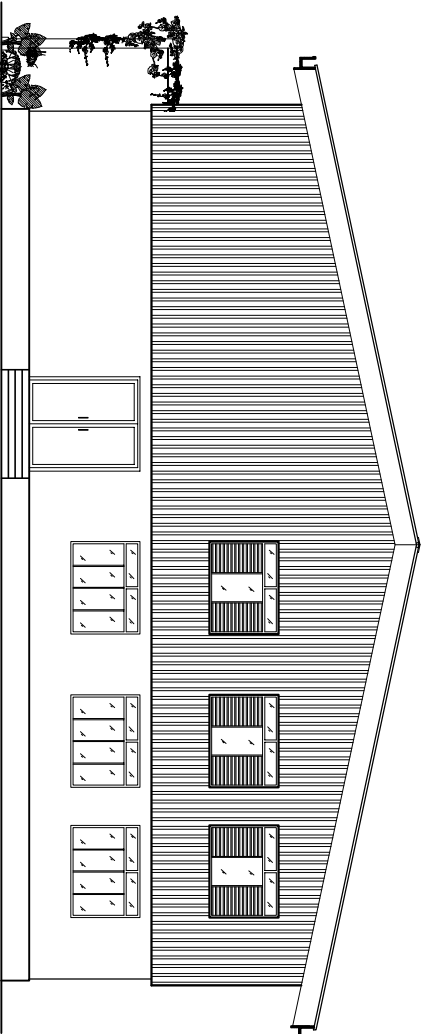
E - mail : architrendsp@gmail.com

Web : www.architrend.lk



SCHEDULE OF DOORS & WINDOWS FOR PROPOSED BUILDING

TYPE	SIZE	DESCRIPTION
D1	2050X2400	AL FRAMED DOUBLE SASH HALF GLAZED ALUMINIUM PANELED DOOR
D2	1200X2550	AL FRAMED DOUBLE SASH HALF GLAZED ALUMINIUM PANELED DOOR WITH FIXED GLASS PANEL ABOVE
TG	5875X2800	TEMPERED GLASS WITH DOUBLE SASHES (1500X2100) TEMPERED GLASS DOOR
W1	2000X1500	AL FRAMED AL PANELED GLAZED CASSEMENT WINDOW WITH FIXED GLASS PANEL ABOVE
FG	2000X1500	AL FRAMED FIXED GLASS AT MIDDLE & LOUVER PANELS AT BOTH SIDES WITH FIXED GLASS PANEL ABOVE
TG1	3300X6060	SS FRAMED TEMPERED GLASS
TG2	3300X3170	SS FRAMED TEMPERED GLASS



SIDE ELEVATION

Ground Floor Area 854m²

Upper Floor Area 300m²

Total Floor Area 1154 m²